



SOKOMAN
MINERALS CORP.

TSXV: SIC | OTCQB: SICNF

The Primary Discovery Company in Newfoundland

- Moosehead (Gold)
- Fleur de Lys (Gold)
- Killick (Lithium)

*High-grade Gold and
Lithium Discoveries!*

PDAC 2024



Brian Bursey Jr. at Killick Lithium Project

Board of Directors: 140 years of Discovery Experience & 80 Years of Capital Markets Experience



Colin R. Bowdidge,
PhD
Independent Director

Gord Fretwell,
Corporate
Secretary

Tim Froude,
P.Geo.
President, CEO &
Director

Peter M. Dimmell,
P.Geo.
Independent
Director





Ryan Newman,
Exploration
Manager

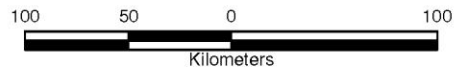
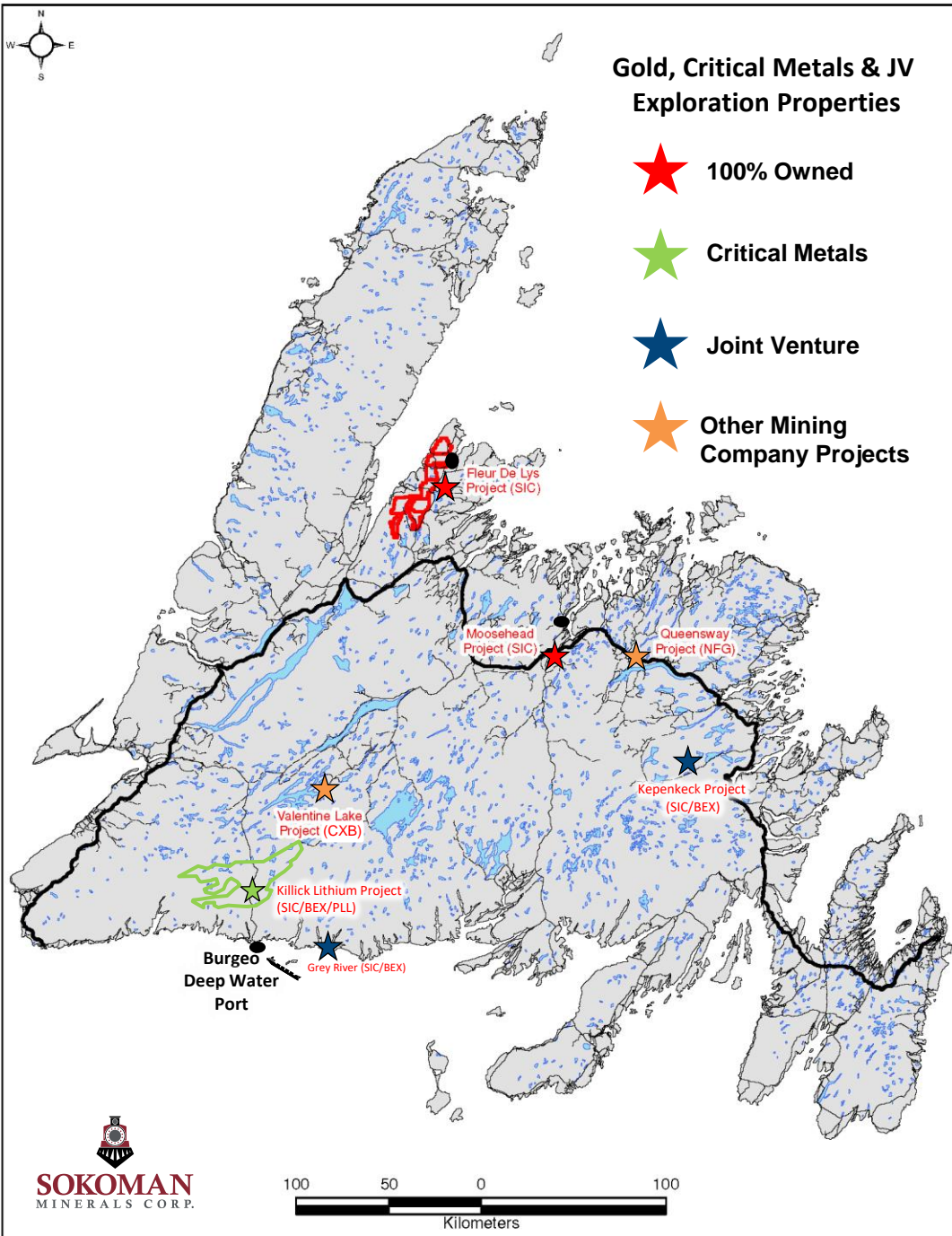
Cathy Hume,
Director & VP
Corporate
Development

James F. Adams,
PhD, CFA
Independent
Director



Gold, Critical Metals & JV Exploration Properties

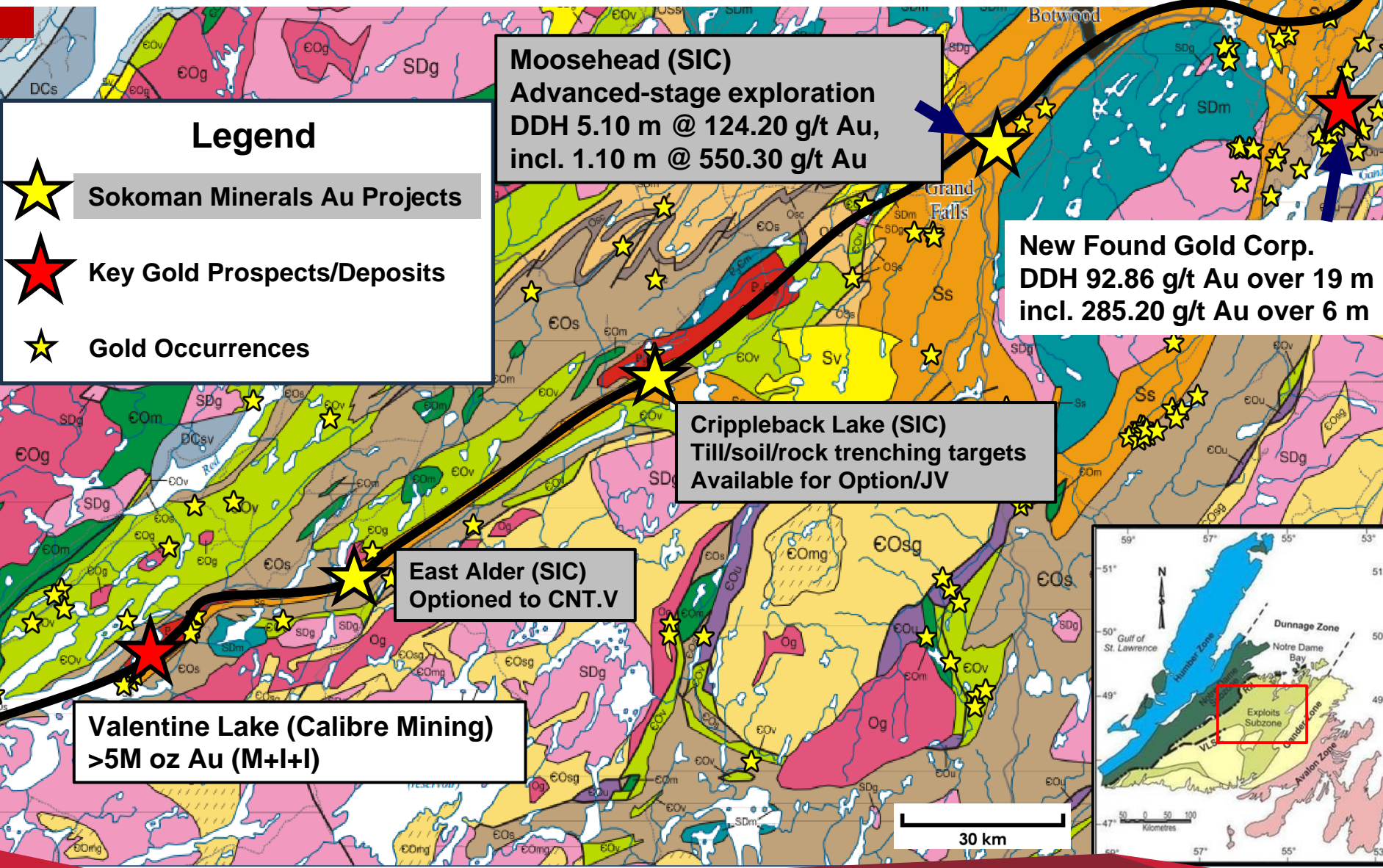
-  100% Owned
-  Critical Metals
-  Joint Venture
-  Other Mining Company Projects



Central Newfoundland Gold District is Canada's newest emerging gold play.

Sokoman Minerals is strategically positioned with multiple quality projects:

- Gold associated with regional scale structures - along underexplored >150 km long trend



Eastern Trend

New High-Grade
Gold Discovery
MH-18-01 11.90 m
@ 44.96 g/t Au
incl. 1.35 m
@ 385.85 g/t Au



Mineralized
Quartz Vein:
Red circles
indicate
visible gold

Moosehead Gold Project – 100% Owned

Project Highlights

- Year-round road access via Trans-Canada Highway
- One-hour drive to assay lab and drilling companies
- Situated on the same trend as >5M oz Au Valentine Lake Project (Calibre Mining)
- Structure/geology/mineralization comparable to Fosterville-type gold deposit (Australia)
- Visible gold has been intersected in drilling over a 2-km strike-length (main zone 500 m X 300 m)
- Drilling by Sokoman since 2018 has defined 7 zones of mineralization all of which remain open
- High grades defined in every zone
- Multiple intersections from 100 to 600 gram-metres

Completed more than 120,000 m and 580 holes



Moosehead Top 25 Holes

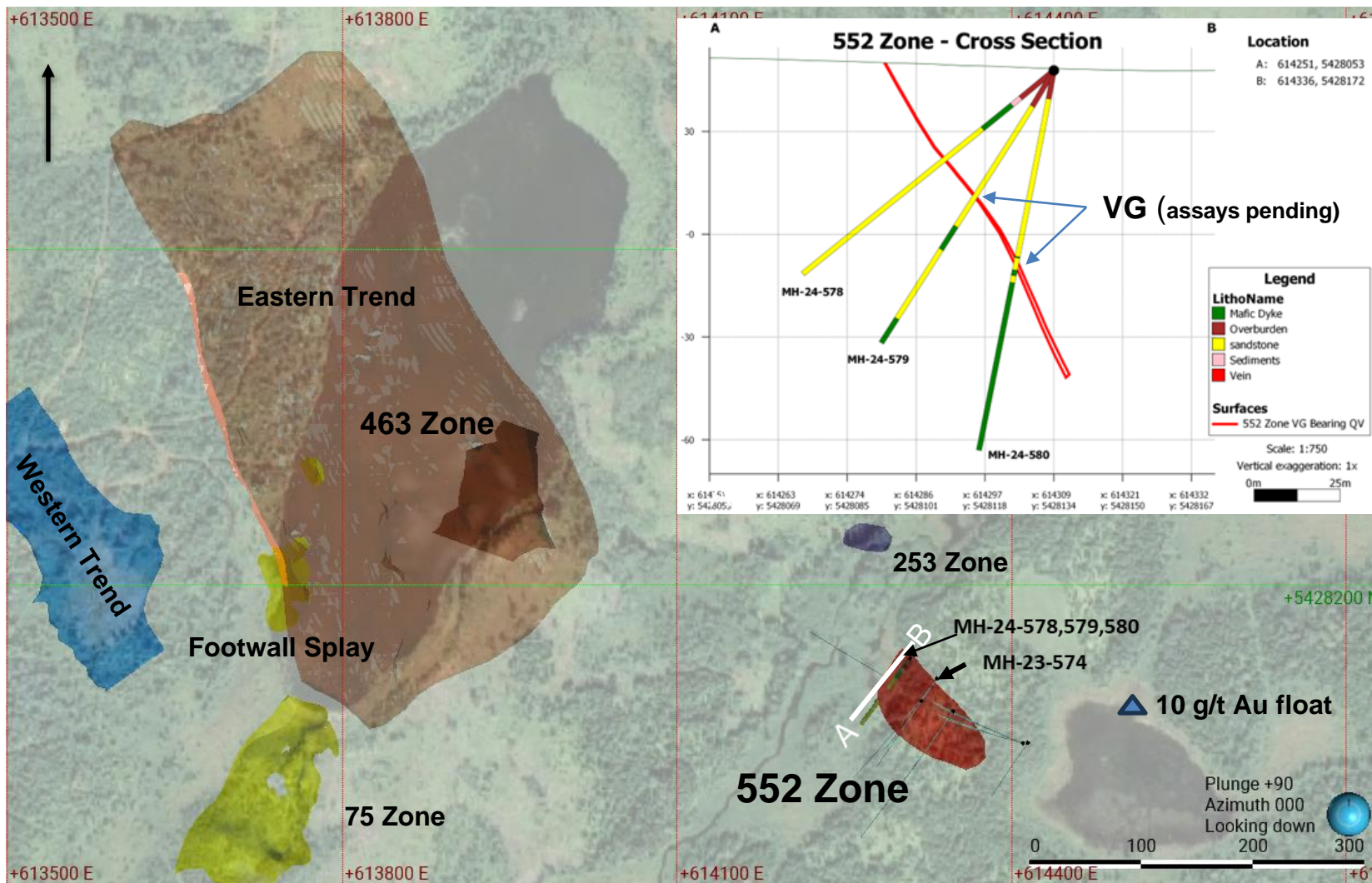
Drill Hole	Target Zone	From (m)	To (m)	Length (m)	Au (g/t)	Gram Metres
MH-18-39	Eastern Trend	75.45	84.5	9.05	70.29	636.12
MH-18-01	Eastern Trend	109	120.9	11.9	44.96	535.02
MH-22-463	Eastern Trend	295.3	334.9	39.6	12.5	495.15
MH-21-342	Eastern Trend	67.8	73.35	5.55	56.58	314.03
MH-21-141	South Pond	47.9	52.1	4.2	64	268.80
MH-01-23	Western Trend	14.18	15.71	1.53	170.31	260.57
MH-21-163	Footwall Splay	36.7	55.6	18.9	13.09	247.35
MH-18-08	Western Trend	8.5	9.55	1.05	207.51	217.89
MH-20-115	Footwall Splay	64	68.6	4.6	47.2	217.12
MH-22-505	Eastern Trend	188.9	210.25	21.35	9.75	208.22
MH-22-366	75 Zone	34.95	36.35	1.4	133.94	187.52
MH-18-17	Eastern Trend	79.8	82.1	2.3	79.23	182.23
MH-21-276	Eastern Trend	42	44.2	2.2	75.82	166.81
MH-19-62	Eastern Trend	237.45	244.65	7.2	22.35	160.92
MH-20-123	South Pond	47	52	5	26.87	134.37
MH-19-81	Eastern Trend	262.8	269.2	6.4	17.34	110.98
MH-21-164	Footwall Splay	79.95	100.9	20.95	5.15	108.00
MH-20-132	Footwall Splay	70.5	74.5	4	24.92	99.67
MH-21-346	Eastern Trend	117.65	122.4	4.75	20.75	98.55
MH-22-359	75 Zone	19.44	20.44	1	95.03	95.03
MH-20-86	Eastern Trend	271.3	276.5	5.2	16.85	87.60
MH-21-234	75 Zone	44.75	49.55	4.8	17.56	84.29
MH-21-166	Footwall Splay	9	14.1	5.1	15.51	79.10
MH-21-191	Eastern Trend	244.05	247.65	3.6	21.86	78.70
MH-19-68	Eastern Trend	83.6	95.4	11.8	6.61	78.00



552 Zone – Focus for Winter 2024 Program

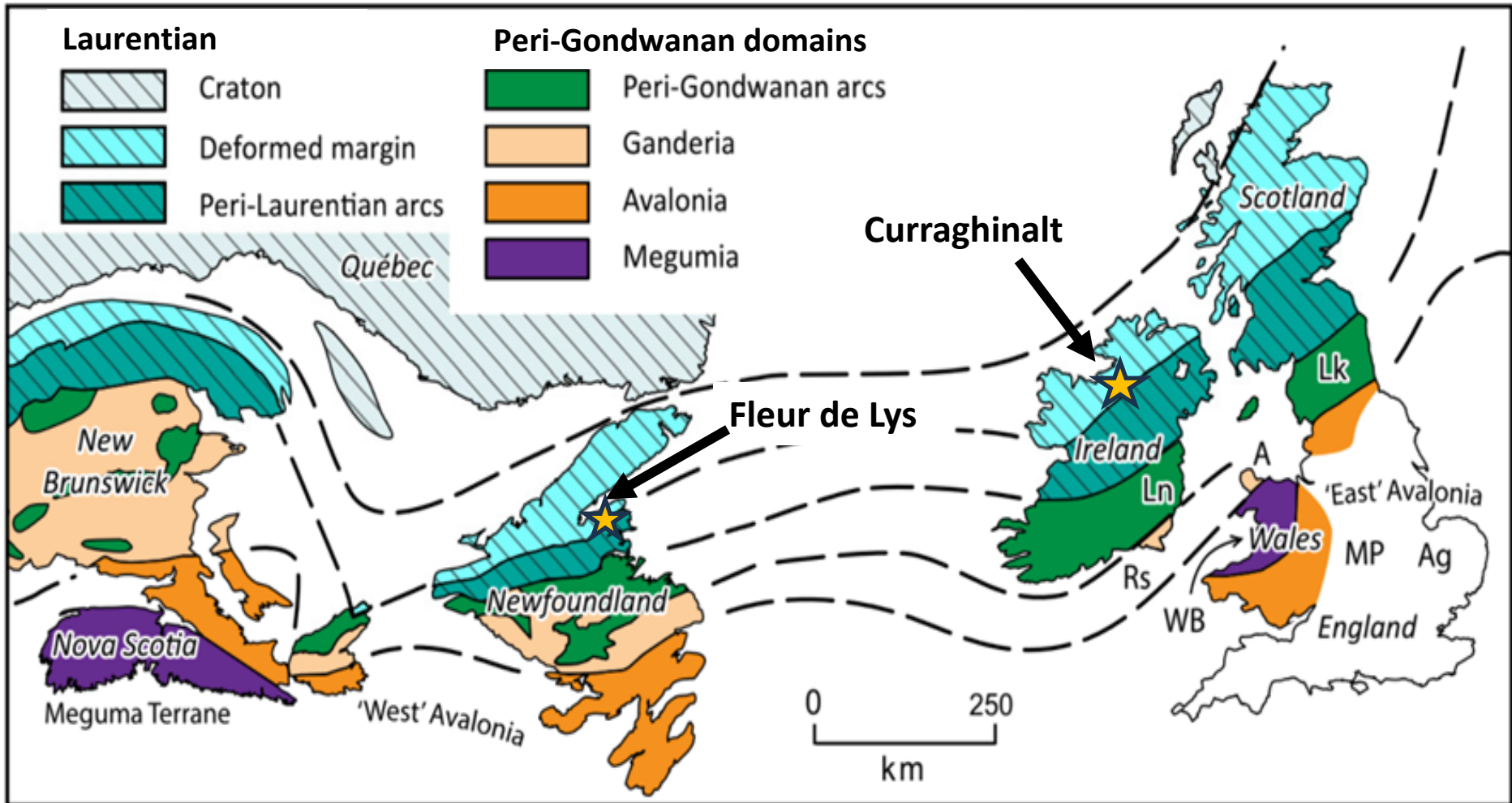


SOKOMAN
MINERALS CORP.



Fleur de Lys - Orogenic Gold on Laurentian Margin

(Fleur de Lys is equivalent to Dalradian)



Fleur de Lys Project

District-size Property

- 1,315 claims (328.75 km²); roads throughout
- Geological equivalent to the Dalradian belt in the Northern UK Caledonides (Curraghinalt > 6M oz)
- Gold-in-Till anomaly extends over 30 km
- New boulder cluster (Golden Bull) 9.02 g/t Au within till anomaly
- One historical drill hole on the property
- Adjacent to an active mining district
- Active logging operations in Au anomalous area
- Diamond drilling in Q3 2024



Golden Bull Discovery – 9.02 g/t Au





Killick Lithium Project (formerly Golden Hope) – Partnership with Benton & Piedmont



Project Highlights

- District-scale property; **>3,200 claims (800 sq km)** in SW Newfoundland
- JV controls more than **60 km** of strike length along key structure – Baie d’Est Fault
- Region hosts two significant gold deposits **Hope Brook Gold Mine** (First Mining/Big Ridge Gold) and **Cape Ray Project** (Matador Mining)
- Close to paved roads (14 km), high voltage substation (10 km), ice-free deepwater port at Burgeo (35 km)
- Lithium-rich dykes discovered in 2021 (up to **2.37% Li₂O** surface grabs) in pegmatite dykes sampled over a 2 km X 1 km area
- At least 10 in-situ lithium-rich dyke occurrences – most not drill tested
- 10,095 m drilled to date – **16.70 m @ 1.06% Li₂O in GH-23-46**
- Cesium/tantalum/rubidium-rich dyke discovered 12 km NE of Kraken/Killick (**8.75% Cs₂O, 0.41% Li₂O, 0.25% Ta₂O₅, 0.33% Rb₂O over 1.2 m channel sample**)



Rick Crocker & pilot Neil Rose flying over Golden Hope JV



Killick Lithium Project

First Lithium and Cesium Discoveries in NL

October 2023 announcement of Partnership with U.S.-based Piedmont Lithium Inc. to advance the Killick Lithium Project

- Killick Dyke best holes:
 - GH-22-27 intersected 15.23 m @ 1.04% Li₂O including 4.18 m @ 1.48% Li₂O
 - GH-23-46 intersected 16.70 m @ 1.06% Li₂O
- Piedmont's (PLL) combined direct and indirect ownership interest in Killick will equal ~70%
- PLL has paid CAD\$2M into Vinland Lithium Inc. for 19.9% ownership
- PLL will fund CAD\$12M of exploration expenses by Killick (managed by Sokoman and Benton)
- CAD\$10M total in PLL share payments to Sokoman and Benton
- Sokoman retains 4M shares in Vinland, ~15% interest in Killick Lithium, CAD\$5M of PLL shares, and 1% NSR
- PLL funding \$2 million exploration in 2024

PIEDMONT
LITHIUM



SOKOMAN
MINERALS CORP.

BENTON
RESOURCES INC.



Killick Dyke: GH-22-26

**Kraken Discovery Dyke:
Killick Lithium Project
(Formerly Golden Hope JV Project)
2.47% Li₂O**



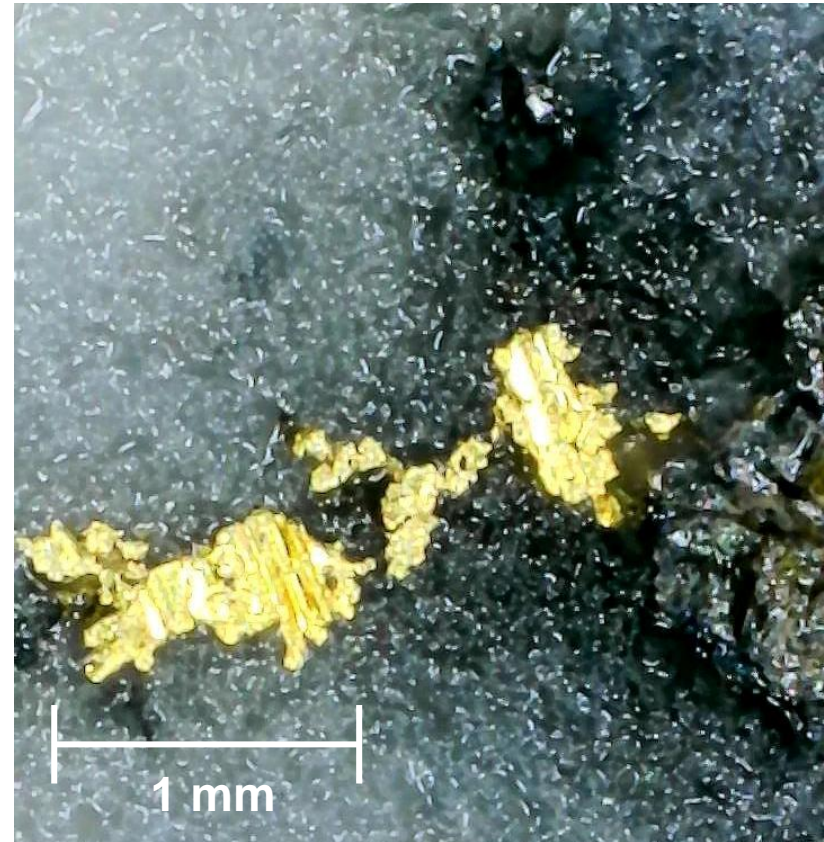
Share Structure (as of February 23, 2024)

Shares Issued & Outstanding	287M
Warrants Ranging from \$0.10 - \$0.45	53M
Stock Options	8M
Fully Diluted	348M
Market Cap	\$15.8M
52 Week High/Low	\$0.25/\$0.05
Eric Sprott	21.1%

Why Sokoman Minerals Corp.?

- ✓ Excellent track record of discoveries
- ✓ Incredible value
- ✓ High-grade results
- ✓ Solidly positioned in one of the best mining jurisdictions globally
- ✓ Among the largest landholders in the province
- ✓ Prospect for additional discoveries is high
- ✓ Experienced team – 140 years combined
- ✓ Funded to continue programs well into 2024

Fleur de Lys Project – Golden Bull Prospect



Contact Information

Timothy Froude, P.Geo.

President, CEO, Director

T: 709.765.1726

E: tim@sokomanmineralscorp.com

Cathy Hume, CEO

CHF Capital Markets

T: 416.868.1079 x 251

E: cathy@chfir.com



[@SokomanMinerals](https://twitter.com/SokomanMinerals)



[@SokomanMinerals](https://www.facebook.com/SokomanMinerals)



[Sokoman Minerals Corp.](https://www.linkedin.com/company/Sokoman%20Minerals%20Corp.)

Fosterville rock sample on Moosehead core

